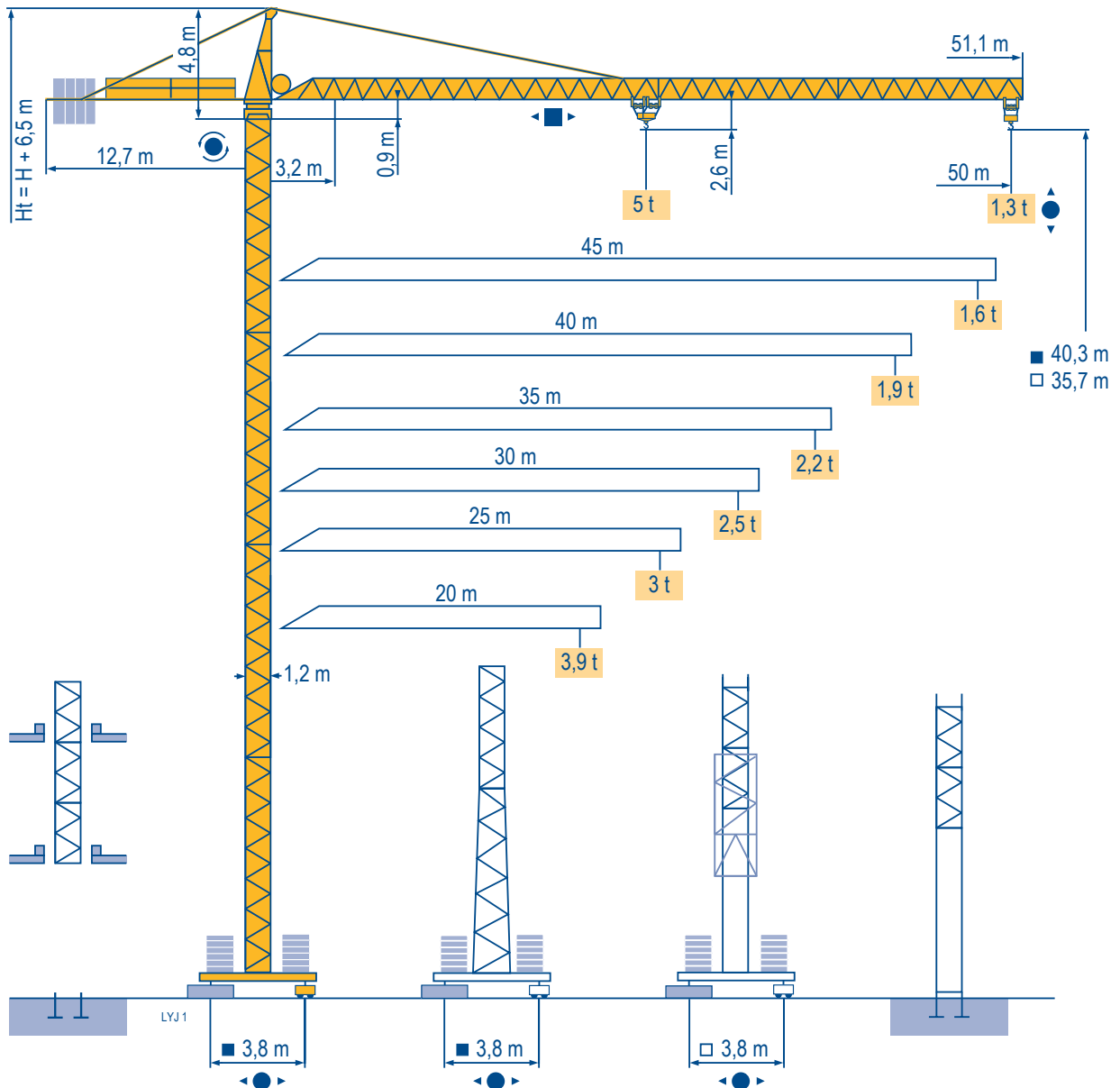
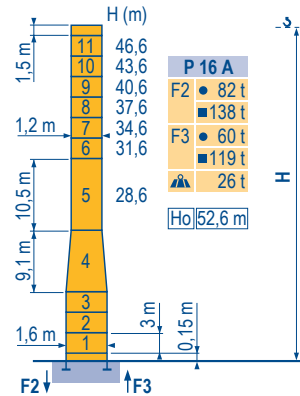
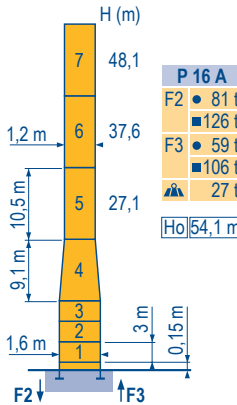
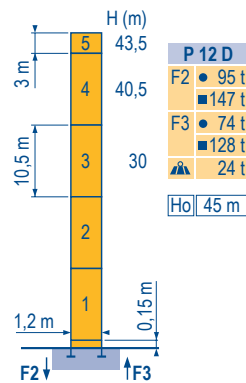
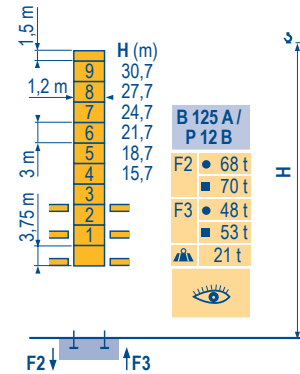
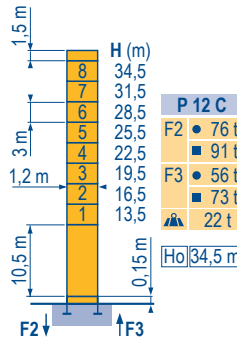
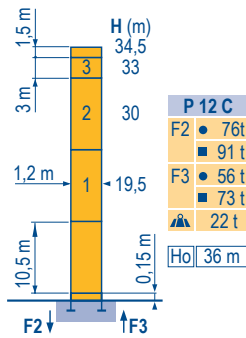


POTAIN CITY CRANE MC 85 B

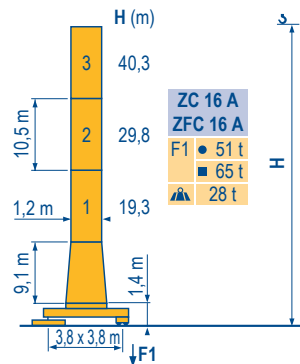
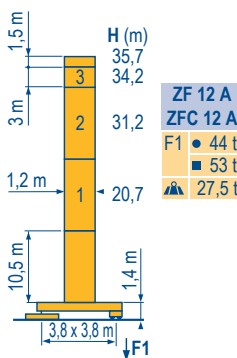
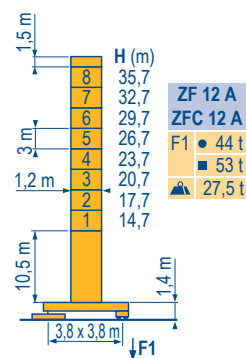


Mat / Réactions \square 1,2 m
 Mast / Eckdrücke \blacksquare
 Masts / Reactions 20 m \Rightarrow 50 m
 Mástil / Reacciones
 Torre / Reazioni
 Tramo / Reações

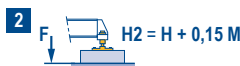
LYJ2



\square 1,2 m
 \blacksquare
 20 m \Rightarrow 50 m



ZF - ZC - ZFC



F

● Réactions en service
 ■ Réactions hors service
 A vide sans lest (ni train de transport) avec flèche et hauteur maximum.

Ho

H sans cabine

D

● Reaktionskräfte in Betrieb
 ■ Reaktionskräfte außer Betrieb
 Ohne Last, Ballast (und Transportachse), mit Maximalausleger und Maximalhöhe.

H Ohne Fahrerhaus

GB

● Reactions in service
 ■ Reactions out of service
 Without load, ballast (or transport axes), with maximum jib and maximum height.

H without cab

E

● Reacciones en servicio
 ■ Reacciones fuera de servicio
 Sin carga, sin lastre, (ni tren de transporte), flecha y altura máxima.

H sin cabina

I

● Reazioni in servizio
 ■ Reazioni fuori servizio
 A vuoto, senza zavorra (ne assali di trasporto) con braccio massimo e altezza massima.

H senza cabina

P

● Reações em serviço
 ■ Reações fora de serviço
 Sem carga (nem trem de transporte)- sem lastro com lança e altura máximas.

H sem cabine

Courbes de charges

Lastkurven

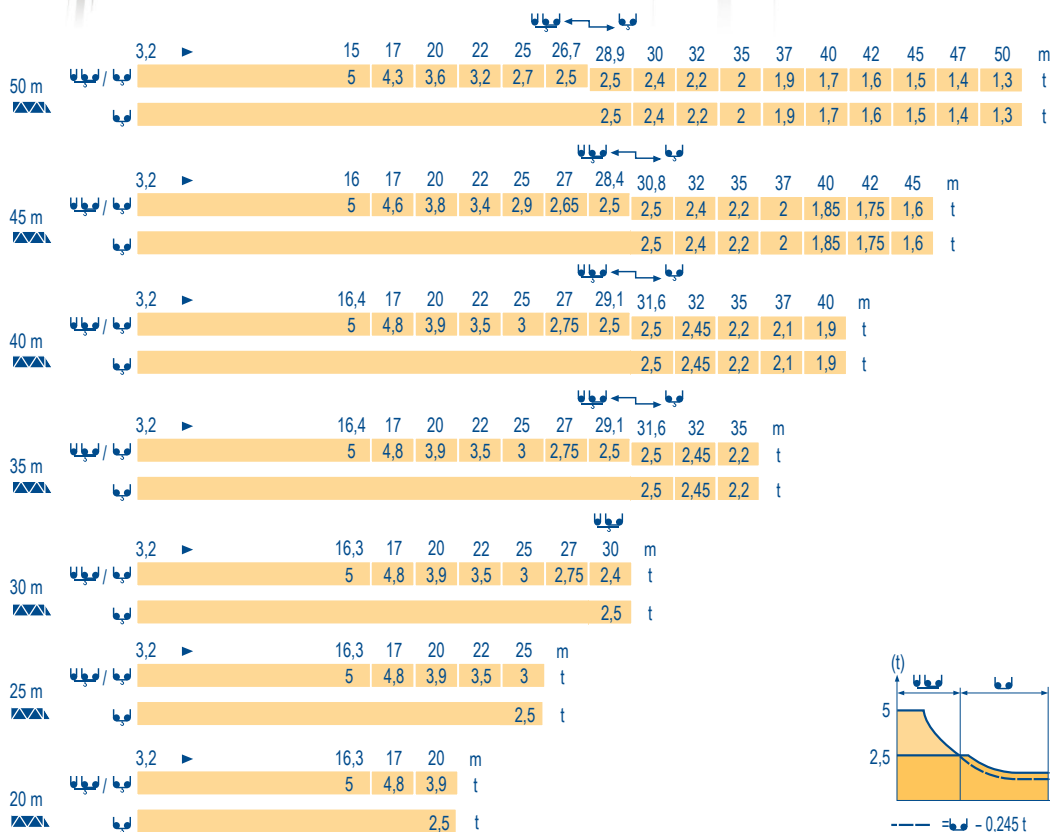
Load diagrams

Curvas de cargas

Curve di carico

Curva de cargas

LYJ.1



Télescopage sur dalles

Kletterkrane im Gebäude

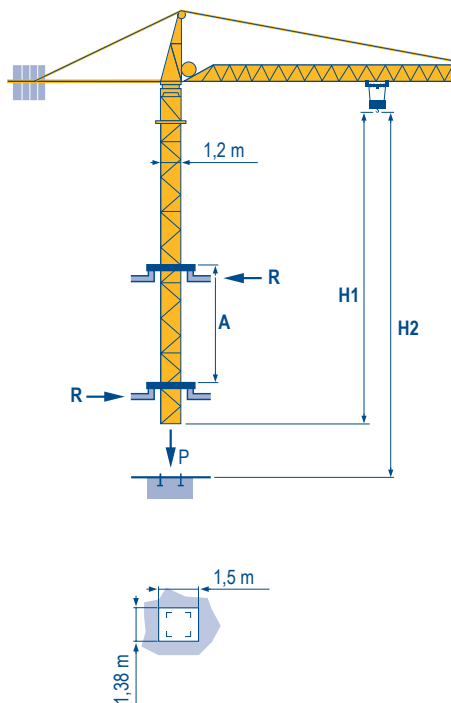
Climbing crane

Telescopage gruas trepadoras

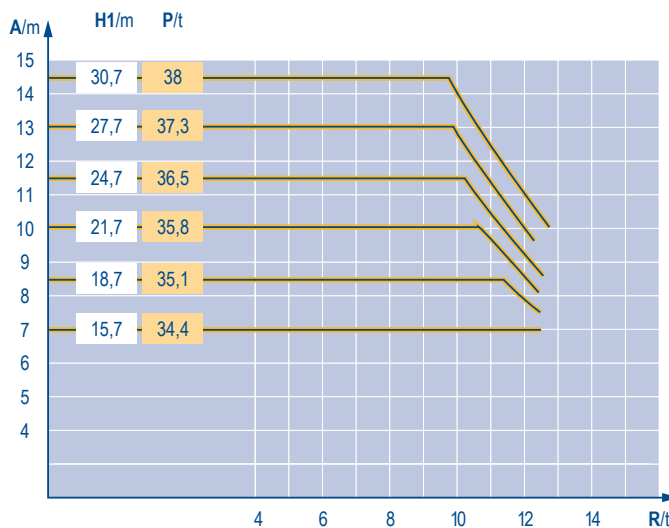
Gru in cavedio

Telescopagem sobre lages

LYJ.2














B 125 A







	F	D	GB	E	I	P
A	Distance entre cadres	Abstand zwischen den Rahmen	Distance between collars	Distancia entra marcos	Distanza fra i telai	Distância entre quadros
H1	Hauteur grue	Kranhöhe	Crane height	Altura grúa	Altezza gru	Altura da grua
P	Poids de la grue(en service)	Krangewicht (in Betrieb)	Crane weight (in service)	Peso de la grúa (en servicio)	Peso della gru (in servizio)	Peso da grua (em serviço)
R	Réaction horizontale	Horizontalkräfte	Horizontal reaction	Reaccion horizontal	Reazione orizzontale	Reacção horizontal
	Voir télescopage sur dalles	Siehe Kletterkrane im Gebäude	See climbing crane	Veja grua trepadora	Consultare gru in cavedio	Ver telescopagem sobre lages

Mécanismes
Antriebe
Mechanisms
Mecanismos
Meccanismi
Mecanismos

LYJ2

			U			UU			ch - PS hp	kW	
											
▲ ▼	15 PC 13-6	m/min	7,2	21,5	43	3,6	11	21,5	15	11	185 m
		t	2,5	2,5	1,3	5	5	2,6			
▲ ▼	25 PC 13-8	m/min	8,2	33	66	4,1	16,5	33	25	18	323 m
		t	2,5	2,5	1,3	5	5	2,6			
▲ ▼	20 LVF 13	m/min	5 → 28,4 → 52,6 → 69			2,5 → 14,4 → 26,3 → 34,5			20	15	323 m
		t	2,5	2,5	1,3	0,65	5	5			
◀ ▶	4 D3 V3	m/min	15 - 30 - 58						4	3	
	RCV 60	tr/min U/min rpm	0 → 0,8						8	6	
ZF 	TVD 324	m/min	26						2 x 4	2 x 2,9	
ZC - ZFC 	RT 224	m/min	25						2 x 4	2 x 2,9	
CEI 38 			IEC 38			kVA					
400 V (+6% -10%) 50 Hz						15 PC : 30 kVA 25 PC : 35 kVA 20 LVF : 30 kVA					

	F	D	GB	E	I	P
	Levage	Heben	Hoisting	Elevación	Sollevamento	Elevação
	Distribution	Katzfahren	Trolleying	Distribución	Distribuzione	Distribuição
	Orientation	Schwenken	Slewing	Orientación	Rotazione	Rotação
	Translation	Kranfahren	Travelling	Traslación	Traslazione	Translação