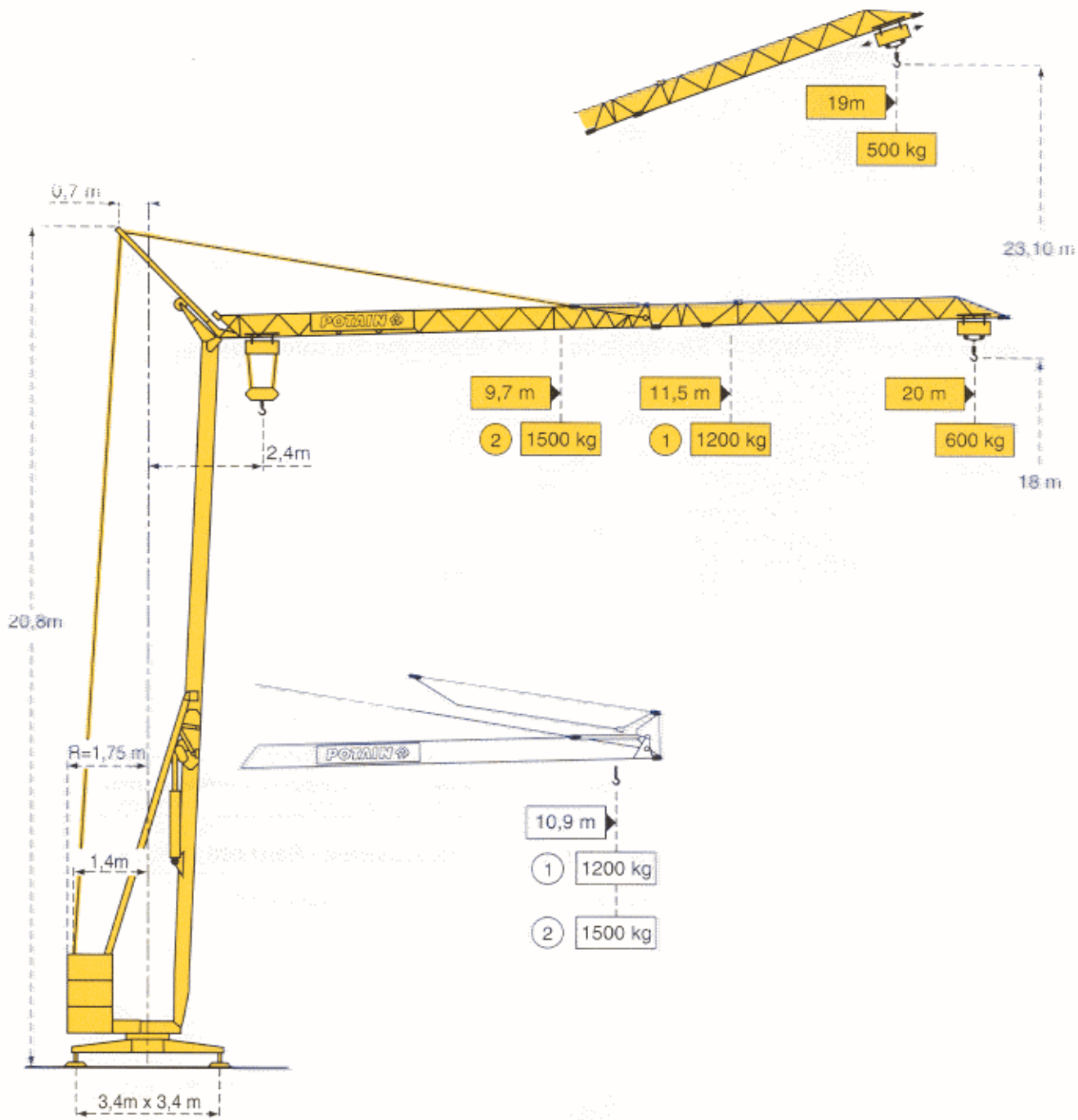


GMR HD 14 A



# GMR HD 14 A

LIM 2



**POTAIN 5P GMR HD 14 A**

**Courbes de charges - Lastkurven - Load diagrams - Curvas de cargas - Curve di carico**



2,4 → 10,9 m  
 20 m 1200 kg

① 1200 kg

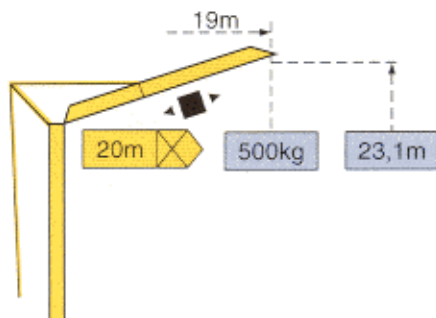
11,5	12	13	14	15	16	17	18	19	20	m
1200	1140	1030	940	865	795	735	685	640	600	kg

2,4 → 10,9 m  
 20 m 1500 kg

② 1500 kg

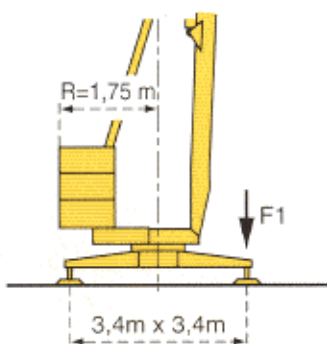
9,7	10	11	12	13	14	15	16	17	18	19	20	m
1500	1435	1275	1140	1030	940	865	795	735	685	640	600	kg

**Flèche relevée - Ausleger in Steilstellung - Luffing jib - Flecha izada - Braccio impennato**



◀ ■ ▶ Chariot distributeur Verfahrbare laufkatze Traversing trolley Carro distribuidor Carrellino distributore

**Réaction - Eckdrücke - Reactions - Reacciones - Reazioni**



F1	● 9t	■ 6,1t
⊕	6t	

● En service  
 ■ Hors service

● In Betrieb  
 ■ Ausser Betrieb

● In service  
 ■ Out of service

● En servicio  
 ■ Fuera de servicio

● In servizio  
 ■ Fuori servizio

⊕ A vide sans lest ni train de transport avec flèche et hauteur maximum.

⊕ Ohne Last, Ballast und Transportachse, mit Maximalausleger und Maximalhöhe.

⊕ Without load, ballast or transport axles, with maximum jib and maximum height.

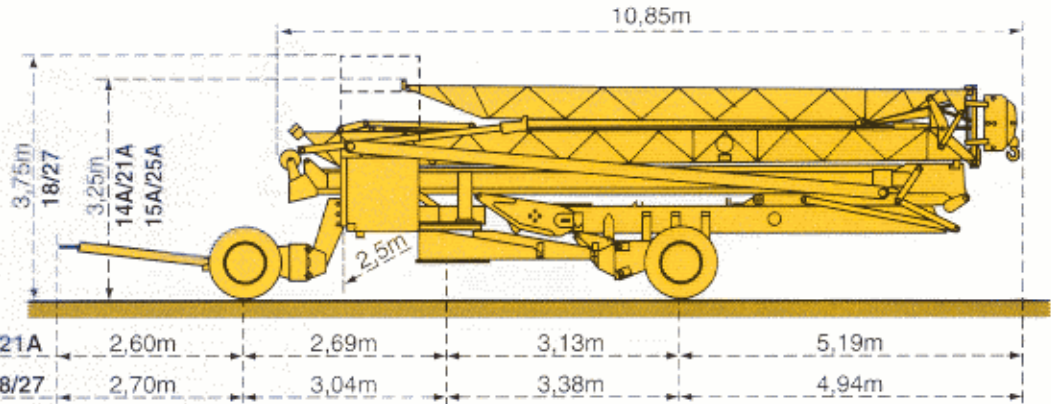
⊕ Sin carga, sin lastre, ni tren de transporte, flecha y altura máxima.

⊕ A vuoto, senza zavorra ne assali di trasporto con braccio massimo e altezza massima.



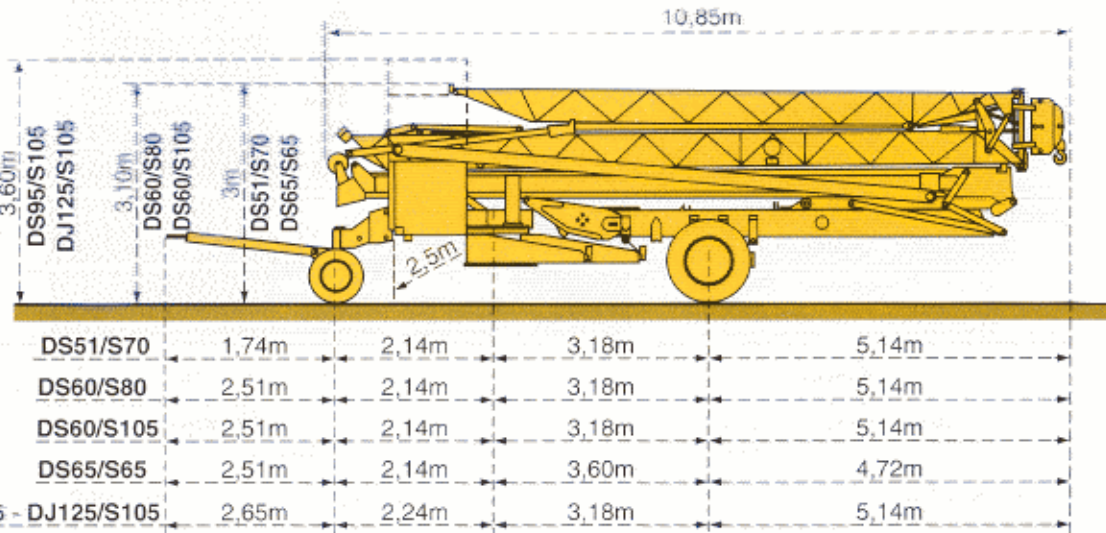
Transport - Transport - Transport - Transporte - Trasporto

- 14A/21A
- 15A/25A
- 18/27



- Chantier
- Baustelle
- Site
- Obra
- Cantiere

- DS51/S70
- DS60/S80
- DS60/S105
- DS65/S65
- DS95/S105
- DJ125/S105



NF E 52081 - 82  
DIN 15018.H1 B3



Document pour usage commercial uniquement - Benutzung dieser Unterlagen nur für Verkaufszwecke - Document for commercial use only - Documento para uso comercial unicamente - Documento per uso commerciale solamente

Copyright.Reproduction interdite © POTAIN 1995



18.Rue de Charbonnières, B.P. 173-F 69132 ECULLY Cedex  
Tél. 72.20.20.20 - Télex 375 213 - Fax 72.20.20.00  
POTAIN GmbH Deutschland Tel: 06.105.704.0  
POTAIN U.K. Great Britain Tel: 0895.44.52.61  
Simma POTAIN Italia Tel: 02.97.96.71  
POTAIN Portugal Portugal Tel: 02.968.08.89

GMR HD 14 A

Ref. 1995.04.LIM 3

Courtesy of Crane.Market

Modificazioni riservate - Subject to modification - Modifications vorbehalten - Änderungen vorbehalten - Modifications réservées - Modifiche riservate

Printed in France - Réalisation SODIPE