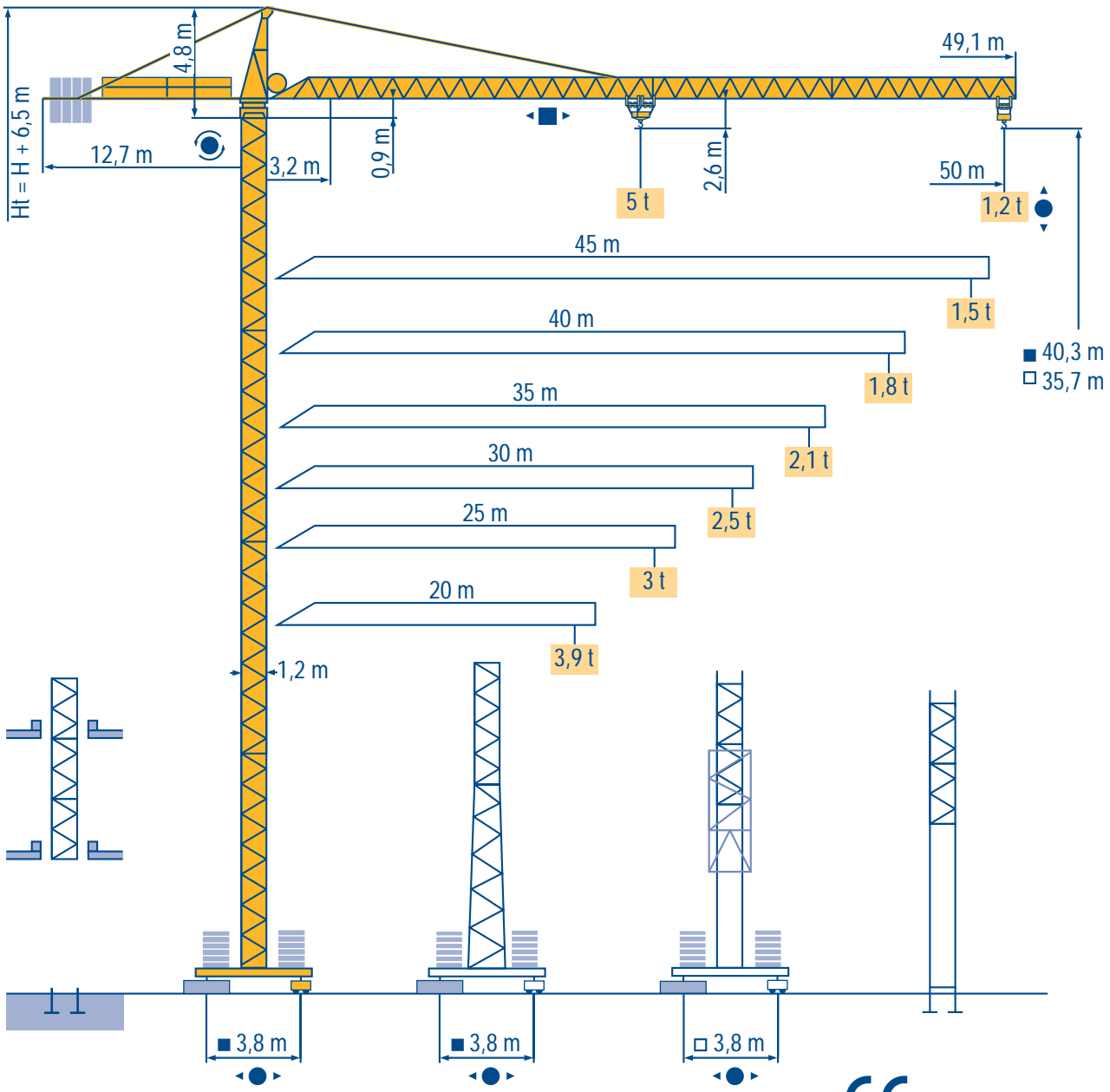


# CITY CRANE MC 85 A

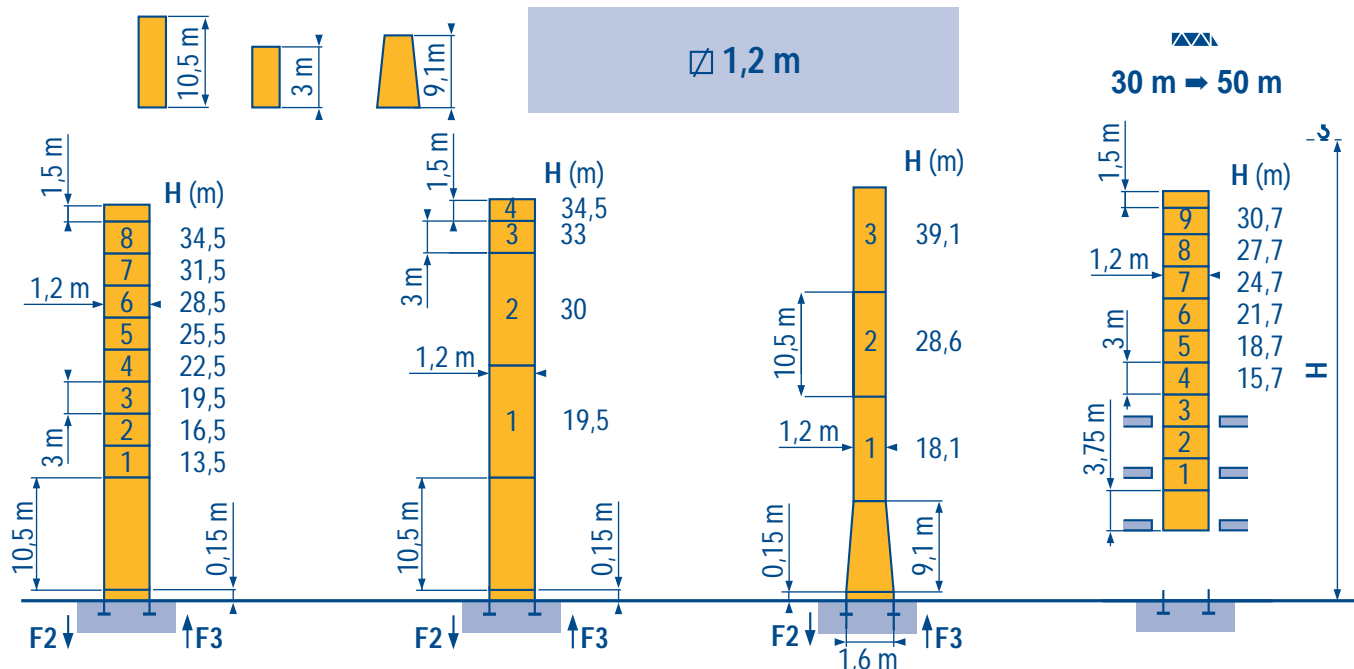


- HD
- HDT
- GTMR
- CITY CRANE
- TOPKIT MD
- MR
- MAXI MD
- MAXI TOPKIT

LOM 1

CE FEM 1.001-A3





**P 12 C**

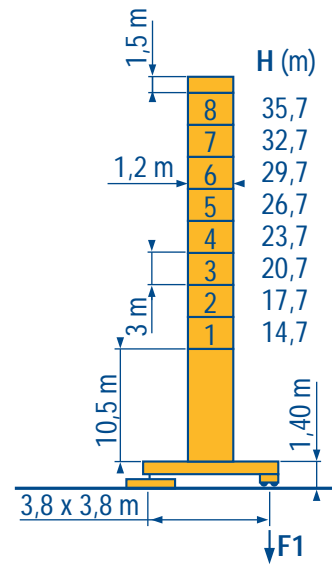
F2	● 69 t	■ 72 t
F3	● 50 t	■ 54 t
	22 t	

**P 12 C**

F2	● 69 t	■ 72 t
F3	● 50 t	■ 54 t
	22 t	

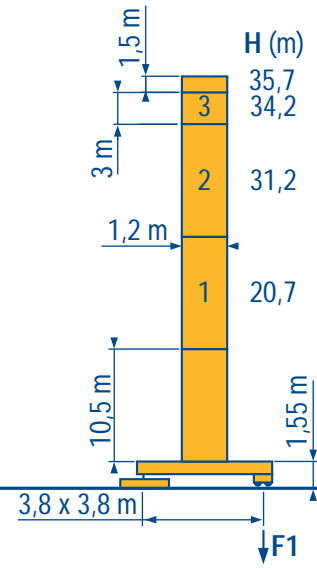
**P 16 A**

F2	● 60 t	■ 69 t
F3	● 40 t	■ 52 t
	22,5 t	



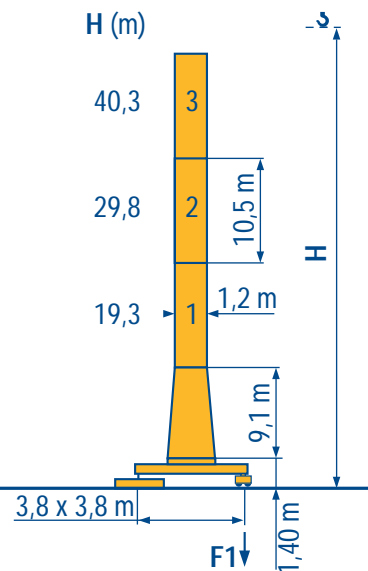
**ZF 12 A**

F1	● 41 t	■ 41 t
	27,5 t	



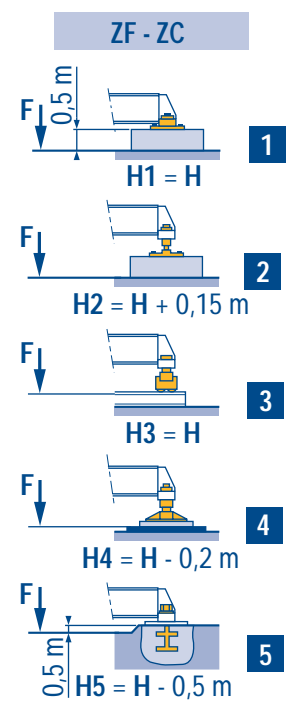
**ZF 12 A**

F1	● 41 t	■ 41 t
	27,5 t	



**ZC 16 A**

F1	● 47 t	■ 53 t
	28 t	



LOM 1

Voir télescopage sur dalles  
 ● Réactions en service  
 ■ Réactions hors service  
 A vide sans lest avec flèche et hauteur maximum.

**F** See climbing crane  
 Reactions in service  
 Reactions out of service  
 Without load and ballast with longest jib and maximum height.

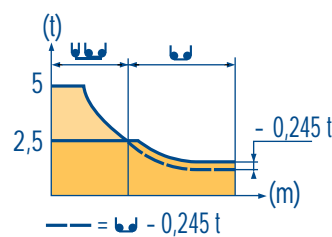
**GB** Consultare gru in cavedio  
 Reazioni in servizio  
 Reazioni fuori servizio  
 A vuoto senza zavorra e con braccio massimo e altezza massima.

Siehe Kletterkrane im Gebäude  
 ● Reaktionskräfte in Betrieb  
 ■ Reaktionskräfte außer Betrieb  
 Ohne Last und Ballast mit Maximalausleger und Maximalhöhe.

**D** Vea grua trepadora  
 Reacciones en servicio  
 Reacciones fuera de servicio  
 Sin carga, sin lastre con flecha y altura máxima.

**E** 见楼板顶升  
 工作状况下的反应  
 非工作状况下的反应  
 空载, 无配重, 起重臂和高度均为最大值

Span (m)	3,2	5	4	3,3	2,9	2,5	2,5	2,2	2,05	1,85	1,75	1,6	1,5	1,35	1,3	1,2	Unit
50 m	14,1	17	20	22	25	27,2	30	32	35	37	40	42	45	47	50	m	t
45 m	15,3	17	20	22	25	27,2	29,5	32	35	37	40	42	45			m	t
40 m	15,7	17	20	22	25	27,8	30,2	32	35	37	40					m	t
35 m	15,7	17	20	22	25	27,8	30,2	32	35							m	t
30 m	16,3	17	20	22	25	27	30									m	t
25 m	16,3	17	20	22	25											m	t
20 m	16,3	17	20													m	t

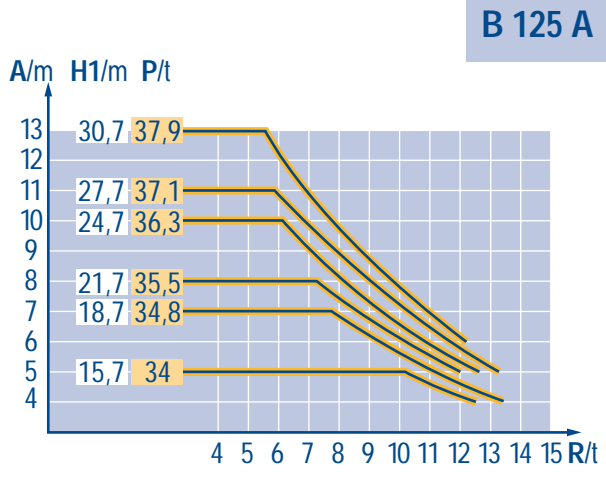
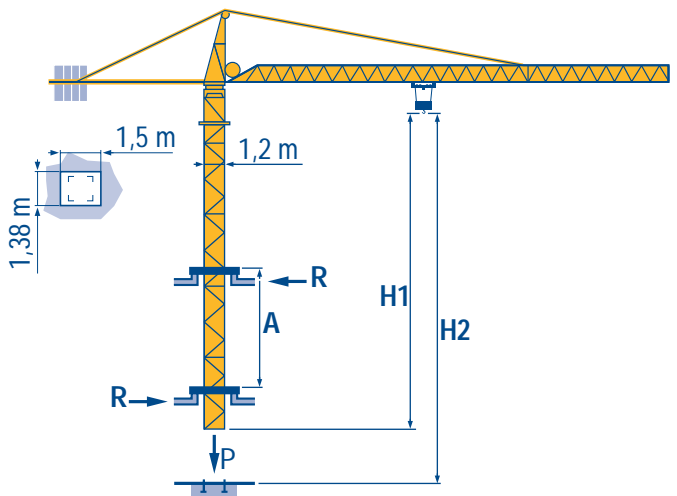


LOM 1

Télescopage sur dalles  
Kletterkrane im Gebäude












Climbing crane  
Telescopage gruas trepadoras

Gru in cavedio  
楼板上顶升















LOM 1

Symbol	French	Spanish	Chinese
A	Distance entre cadres	Distance between collars	各附着框之间距离
H1	Hauteur grue	Crane height	工作状态下塔机高度
P	Poids de la grue (en service)	Crane weight (in service)	工作状态下塔机重量
R	Réaction horizontale	Horizontal reaction	水平反力

		☺			☺☺			ch - PS hp	kW		
											
▲ ● ▼	15 PC 13	m/min	7	21	42	3,5	10,5	21	15	11	185 m > 185 ⓘ
		t	2,5	2,5	1,3	5	5	2,6			
	25 PC 13	m/min	6,6	33	66	3,3	16,5	33	25	18,5	322 m > 322 ⓘ
		t	2,5	2,5	1,3	5	5	2,6			
	25 LVF 13	m/min	4 → 10,5 → 33 → 66			2 → 5,25 → 16,5 → 33			25	18,5	322 m > 322 ⓘ
		t	2,5	2,5	2,5	1,3	5	5			
◀ ▶	3 D2 V5 	m/min	21 - 42						3	2,2	
	4 D3 V3 	m/min	15 - 30 - 58						4	3	
⊙	RCV 80	tr/min U/min rpm	0 → 0,8						8	5	
ZF 	TVD 324 C1	m/min	26						2 x 4	2 x 2,9	
ZC 	RT 224	m/min	25						2 x 4	2 x 2,9	

CEI 38 	IEC 38	<b>kVA</b>	
400 V (+6% -10%) 50 Hz		15 PC : 25 kVA 25 PC - 25 LVF : 35 kVA	84/534 - 87/405

LOM 1

     	Levage Distribution Orientation Translation Conforme aux directives CEE 84/534 et 87/405 sur le niveau acoustique Nous consulter	<b>F</b>	Hoisting Trolleying Slewing Travelling In compliance with the EEC 84/534 and 87/405 Instructions on noise level Consult us	<b>GB</b>	Sollevamento Distribuzione Rotazione Traslazione Conforme alle direttive CEE 84/534 e 87/405 sul livello acustico Consultateci	<b>I</b>
	     	Heben Katzfahren Schwenken Kranfahren Gemäss EWG-Richtlinien 84/534 und 87/405 für den Schall-Leistungspegel Auf Anfrage	<b>D</b>	Elevación Distribución Orientación Traslación Conforme con las directivas CEE 84/534 y 87/405 sobre el nivel acustico Consultarnos	<b>E</b>	起升 变幅 回转 行走 符合 CEE 84/534 - CEE 87/405 声晌度规定 请向我方咨询

Ref. 1997.52 LOM 1



18.Rue de Charbonnières, B.P. 173-F  
69132 ECULLY Cedex  
Tél. (33)04.72.20.20.20  
Fax (33)04.72.20.20.00  
http://www.potain.fr  
E-mail : mkt@potain.fr

**CITY CRANE MC 85 A**

Copyright.Reproduction interdite © POTAIN 1997

**Deutschland**  
POTAIN GmbH Tel : 06.105.704.0  
**Italia**  
POTAIN S.p.A. Tel : 039.65.631  
**China**  
Zhangjiagang POTAIN Tel : 520. 877.1451

修改在我方  
 Modifiche riservate  
 Modificaciones reservadas  
 Subject to modification  
 Änderungen vorbehalten  
 Modifications réservées  
 Printed in France  
 Réalisation SODIPE