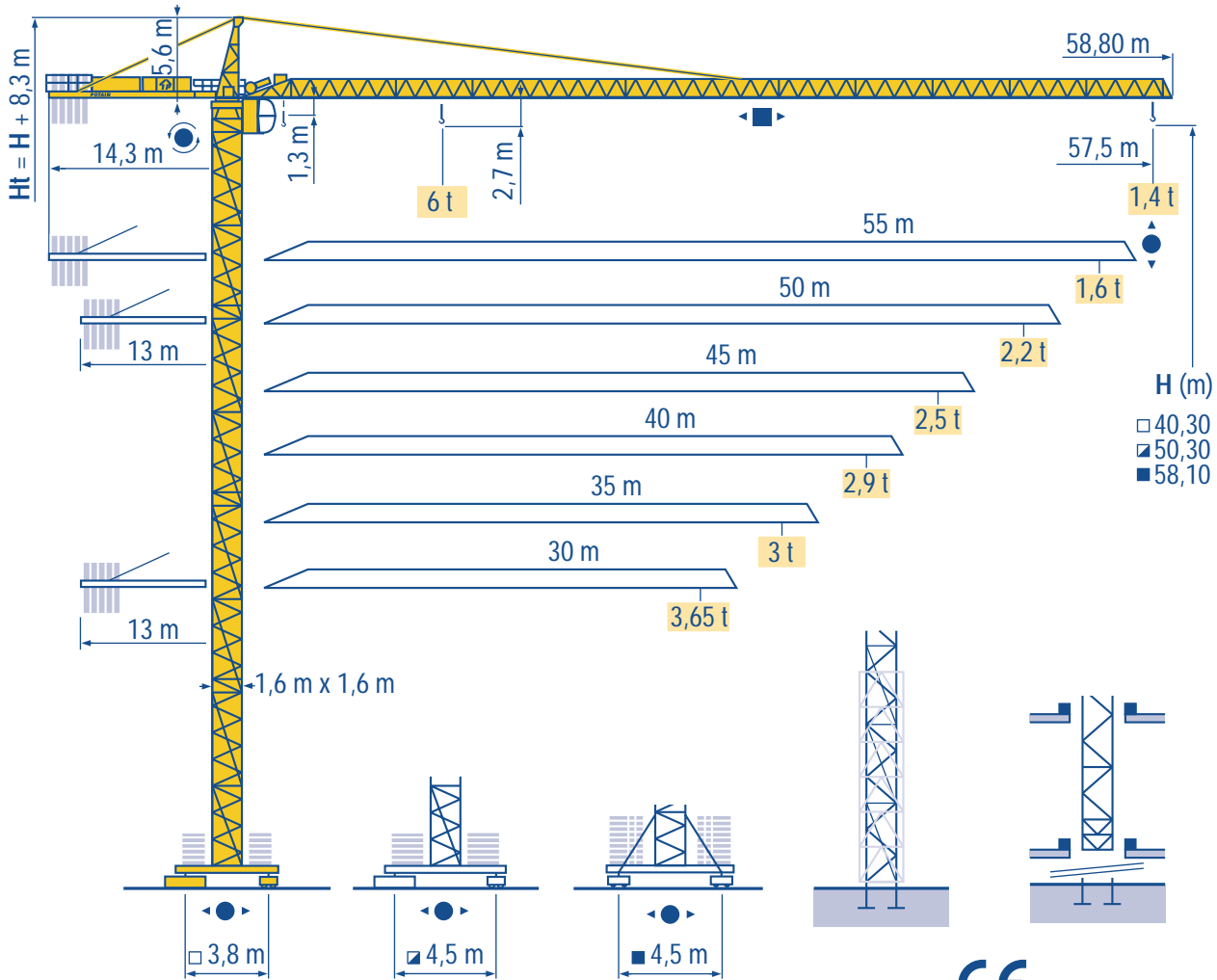


# CITY CRANE MD 125 B



HD  
HDM



HDT



GTMR



CITY CRANE



TOPKIT MD  
MAXI MD



MAXI TOPKIT



Topless MDT



MR



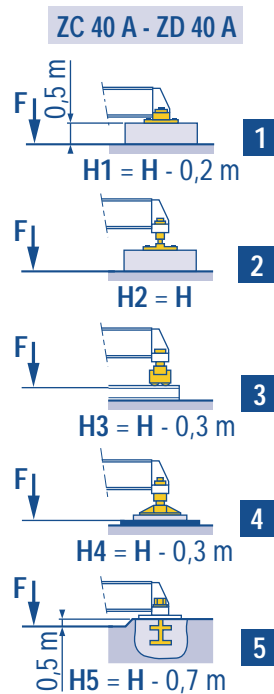
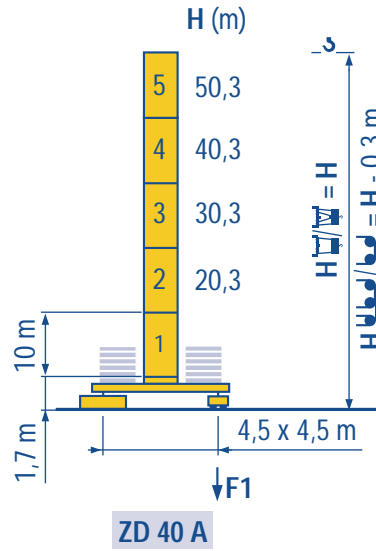
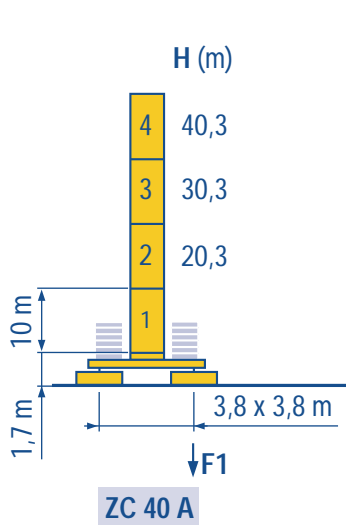
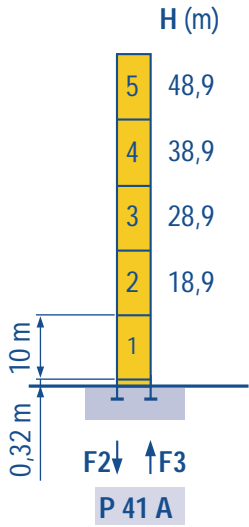
CE FEM 1.001-A3



Maste / Eckdrücke  
City 1,6 m

Mástil / Reacciones  
City 1,6 m

塔身 / 反力  
City 1,6 m



F2	● 105 t	■ 147 t
F3	● 71 t	■ 116 t
👤	33 t	

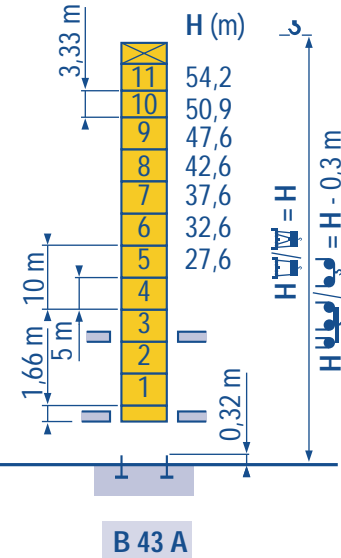
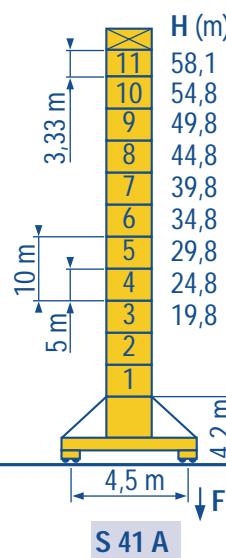
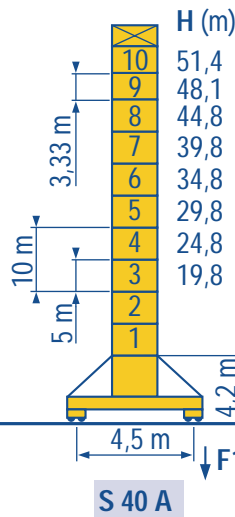
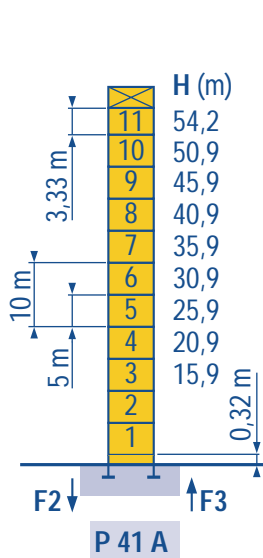
F1	● 58 t	■ 63 t
👤	35 t	

F1	● 65 t	■ 83 t
👤	40 t	

Télescopable 1,6 m  
Teleskopierbar 1,6 m

Telescopic 1,6 m  
Telescopico 1,6 m

Telescopico 1,6 m  
可顶升 1,6 m



F2	● 115 t	■ 173 t
F3	● 81 t	■ 142 t
👤	46 t	

F1	● 73 t	■ 96 t
👤	50 t	

F1	● 86 t	■ 121 t
👤	54 t	



👁 Voir télescopage sur dalles  
● Réactions en service  
■ Réactions hors service  
👤 A vide sans lest (ni train de transport) avec fleche et hauteur maximum.

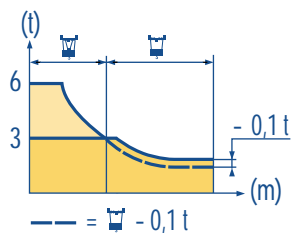
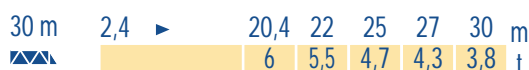
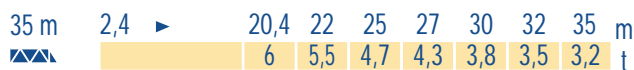
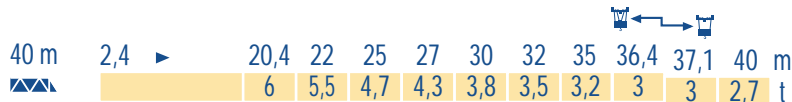
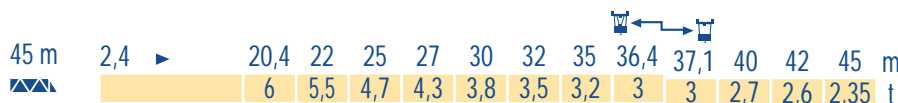
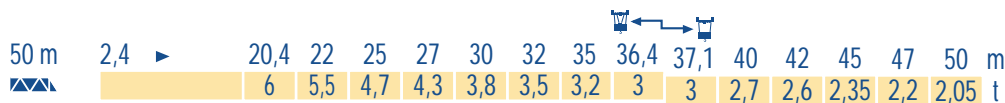
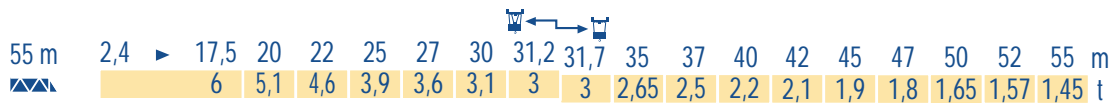
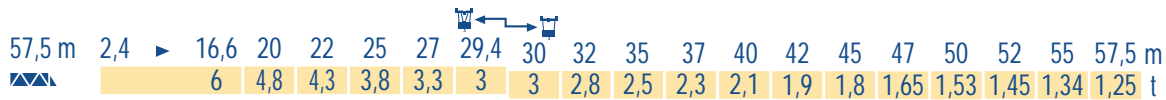
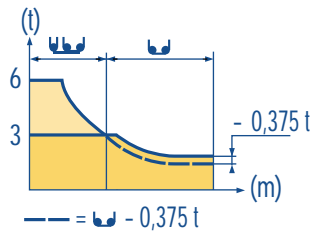
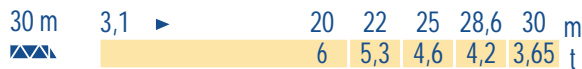
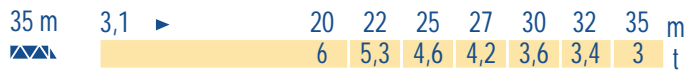
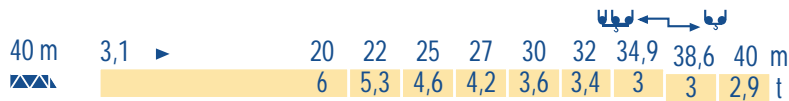
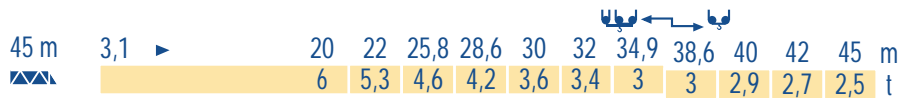
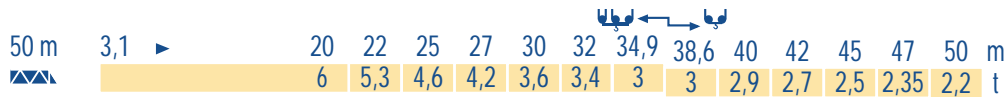
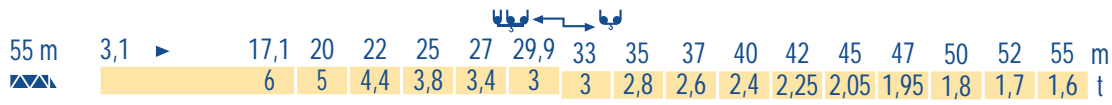
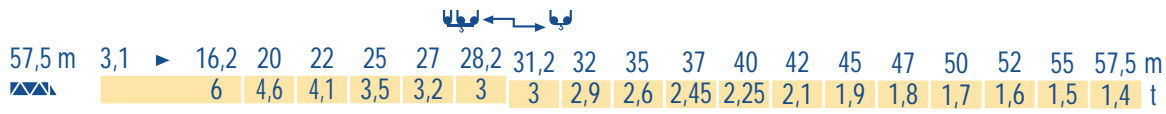
👁 See climbing crane  
● Reactions in service  
■ Reactions out of service  
👤 Without load, ballast (or transport axes), with maximum jib and maximum height.

👁 Consultare gru in cavedio  
● Reazioni in servizio  
■ Reazioni fuori servizio  
👤 A vuoto, senza zavorra (ne assali di trasporto) con braccio massimo e altezza massima.

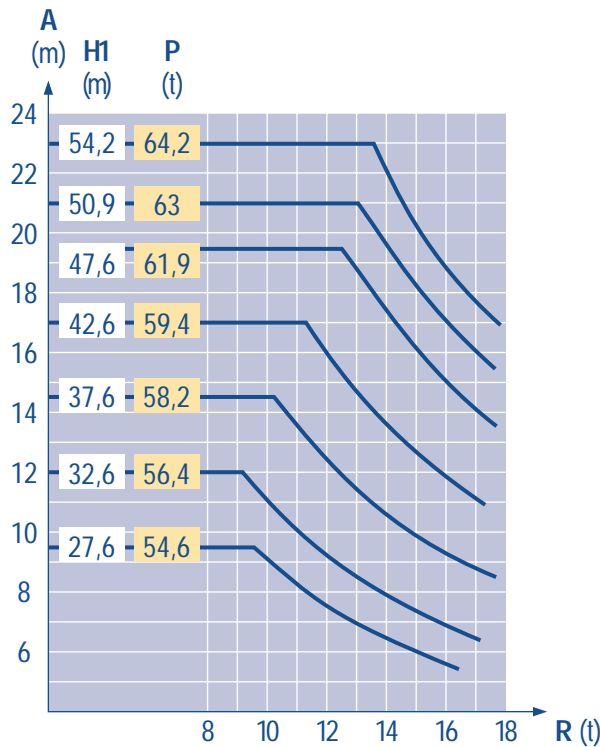
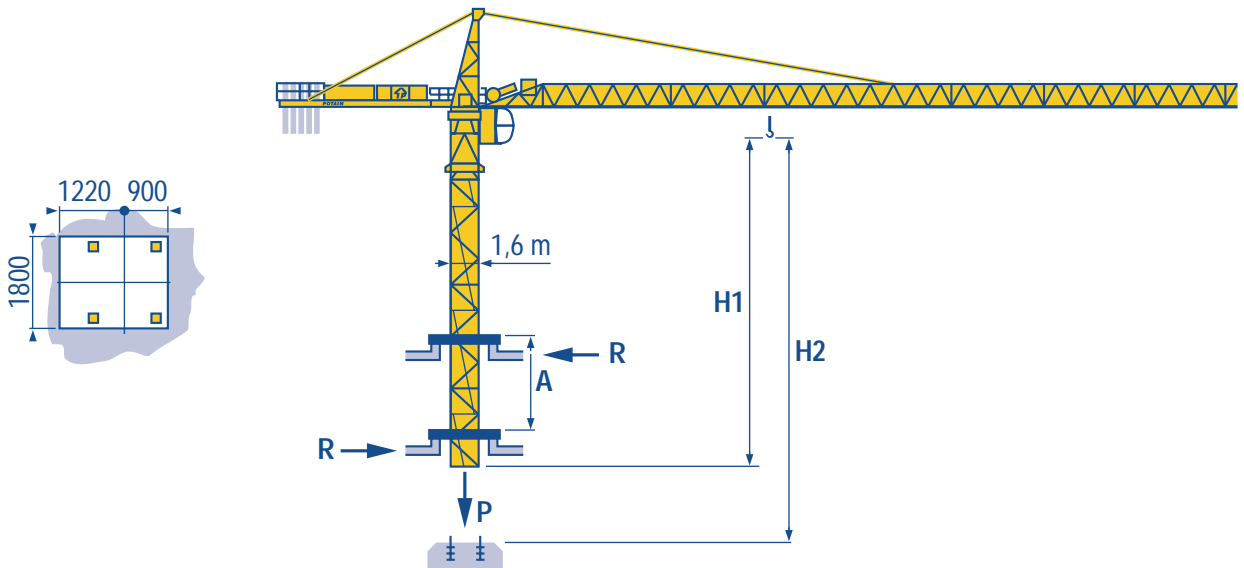
👁 Siehe kletterkrane im gebäude  
● Reaktionskräfte in Betrieb  
■ Reaktionskräfte außer Betrieb  
👤 Ohne Last, Ballast (und Transportachse), mit Maximalausleger und Maximalhöhe.

👁 Vea grua trepadora  
● Reacciones en servicio  
■ Reacciones fuera de servicio  
👤 Sin carga, sin lastre, (ni tren de transporte), flecha y altura máxima.

👁 見楼板顶升  
● 工作状态下的反应  
■ 非工作状态下的反应  
👤 空载无压重也无运输车有吊臂和最大高度



LSP 1



LSP 1

A Distance entre cadres

H1 Hauteur grue

P Poids de la grue (en service)

R Réaction horizontale

F Distance between collars

Crane height

Crane weight (in service)

Horizontal reaction

GB Distanza fra i telai

Altezza gru

Peso della gru (in servizio)

Reazione orizzontale

A Abstand zwischen den Rahmen

H1 Kranhöhe

P Krangewicht (in Betrieb)

R Horizontalkräfte

D Distancia entra marcos

Altura grúa

Peso de la grúa (en servicio)

Reaccion horizontal

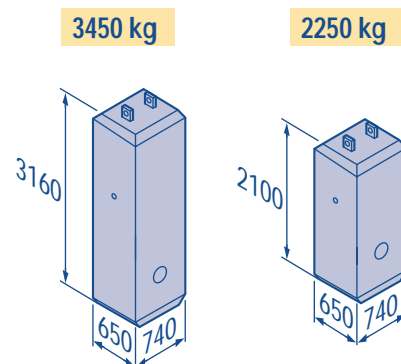
E 各附着框之间距离

工作状态下塔机高度

工作状态下塔机重量

水平反力

		3450 kg	2250 kg	 (kg)
57,5 m	14,3 m	5	-	17 250
55 m	14,3 m	4	1	16 050
50 m	13 m	4	1	16 050
45 m	13 m	3	2	14 850
40 m	13 m	4	-	13 800
35 m	13 m	3	1	12 600
30 m	13 m	2	2	11 400



LSP 1

Lest de base  
Grundballast

F

Base ballast

GB

Zavorra di base

I





D

Lastre de base








E

压重

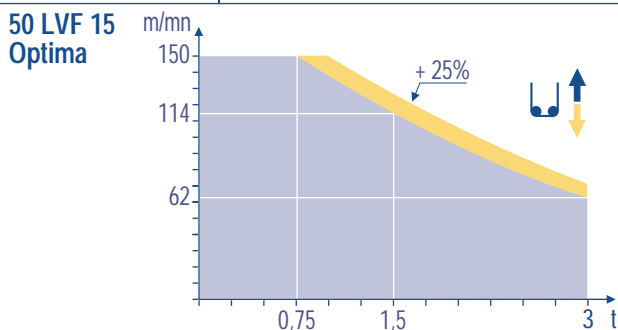
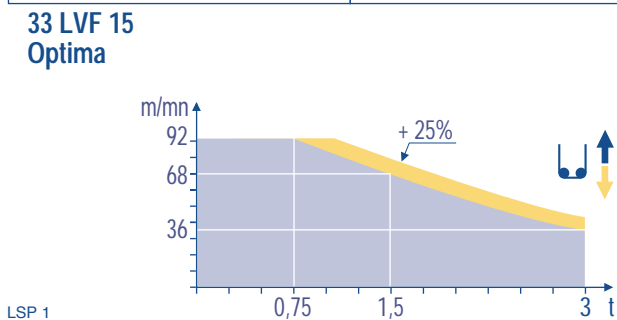
C












∅1,6 m	ZC 40 A - ● >	H (m)	40,3	30,3	20,3						
		 (t)	65	60	55						
∅1,6 m	ZD 40 A - ● >	H (m)	50,3	40,3	30,3	20,3					
		 (t)	70	55	45	45					
∅1,6 m	S 40 A - ● >	H (m)	51,4	48,1	44,8	39,8	34,8	29,8	24,8	19,8	
		 (t)	84	72	54	36	36	36	36	36	
∅1,6 m	S 41 A - ● >	H (m)	58,1	54,8	49,8	44,8	39,8	34,8	29,8	24,8	19,8
		 (t)	114	102	78	54	36	36	36	36	36

LSP 1

		U ↑			UU ↑			ch - PS hp	kW			
	25 PC 15	m/min	6	30	60	3	15	30	25	18,4	260 m	
		t	3	3	1,5	6	6	3				
	33 PC 15	m/min	6	37,5	75	3	19	37,5	33	24	260 m	
		t	3	3	1,5	6	6	3				
33 LVF 15 Optima	m/min	3 → 12 → 36 → 48 → 68 → 92			1,5 → 6 → 18 → 24 → 34 → 46			30	22	260 m		
	t	3	3	3	2,25	1,5	0,75				6	6
50 LVF 15 Optima	m/min	5 → 20 → 62 → 80 → 114 → 150			2,5 → 10 → 31 → 40 → 57 → 75			50	37	398 m		
	t	3	3	3	2,25	1,5	0,75				6	6
	4 D3 V3	m/min	15 - 30 - 58						4	3		
	RCV 145	tr/min U/min rpm	0 → 0,8						2 x 6	2 x 4,4		
ZC 40 A ZD 40 A 	RT 224	m/min	25						2 x 4	2 x 2,9		
S 40 A 	RT 324 R ≥ 10 m	m/min	12,5 - 25						2 x 7	2 x 5,2		
S 41 A 	RT 443 A1 2V R ≥ 10 m	m/min	15 - 30						4 x 5	4 x 3,7		

CEI 38 	IEC 38	kVA	
400 V (+6% -10%) 50 Hz		25 PC : 40 kVA 33 PC : 50 kVA 33 LVF : 50 kVA 50 LVF : 65 kVA	84/534 - 87/405



     	<p>Levage Distribution Orientation Translation Conforme aux directives CEE 84/534 et 87/405 sur le niveau acoustique</p>	<p><b>F</b></p>	<p>Hoisting Trolleying Slewing Travelling In compliance with the EEC 84/534 and 87/405 Instructions on noise level</p>	<p><b>GB</b></p>	<p>Sollevamento Distribuzione Rotazione Traslazione Conforme alle direttive CEE 84/534 e 87/405 sul livello acustico</p>	<p><b>I</b></p>
    	<p>Heben Katzfahren Schwenken Kranfahren Gemäss EWG-Richtlinien 84/534 und 87/405 für den Schall-Leistungspegel</p>	<p><b>D</b></p>	<p>Elevación Distribución Orientación Traslación Conforme con las directivas CEE 84/534 y 87/405 sobre el nivel acustico</p>	<p><b>E</b></p>	<p>起升 变幅 回转 行走 符合 CEE 84/534 - CEE 87/405 声晌度规定</p>	<p><b>C</b></p>

Ref. 2000.05 LSP 1



18.Rue de Charbonnières, B.P. 173  
F-69132 ECULLY Cedex  
Tél. (33)04.72.18.20.20  
Fax (33)04.72.18.20.00  
http://www.potain.com  
E-mail : mkt@potain.fr

**CITY CRANE MD 125 B**  
Copyright.Reproduction interdite © POTAIN 2000

**Deutschland**  
POTAIN GmbH Tel : 06.105.704.0  
**Italia**  
POTAIN S.p.A. Tel : 0.331.49.33.11  
**Singapore**  
POTAIN PTE LTD Tel : (00.65) 227.1550

Modificazioni riservate / Modifications reservadas / Subject to modification / Änderungen vorbehalten / Modifications réservées / Printed in France / Réalisation Headlines