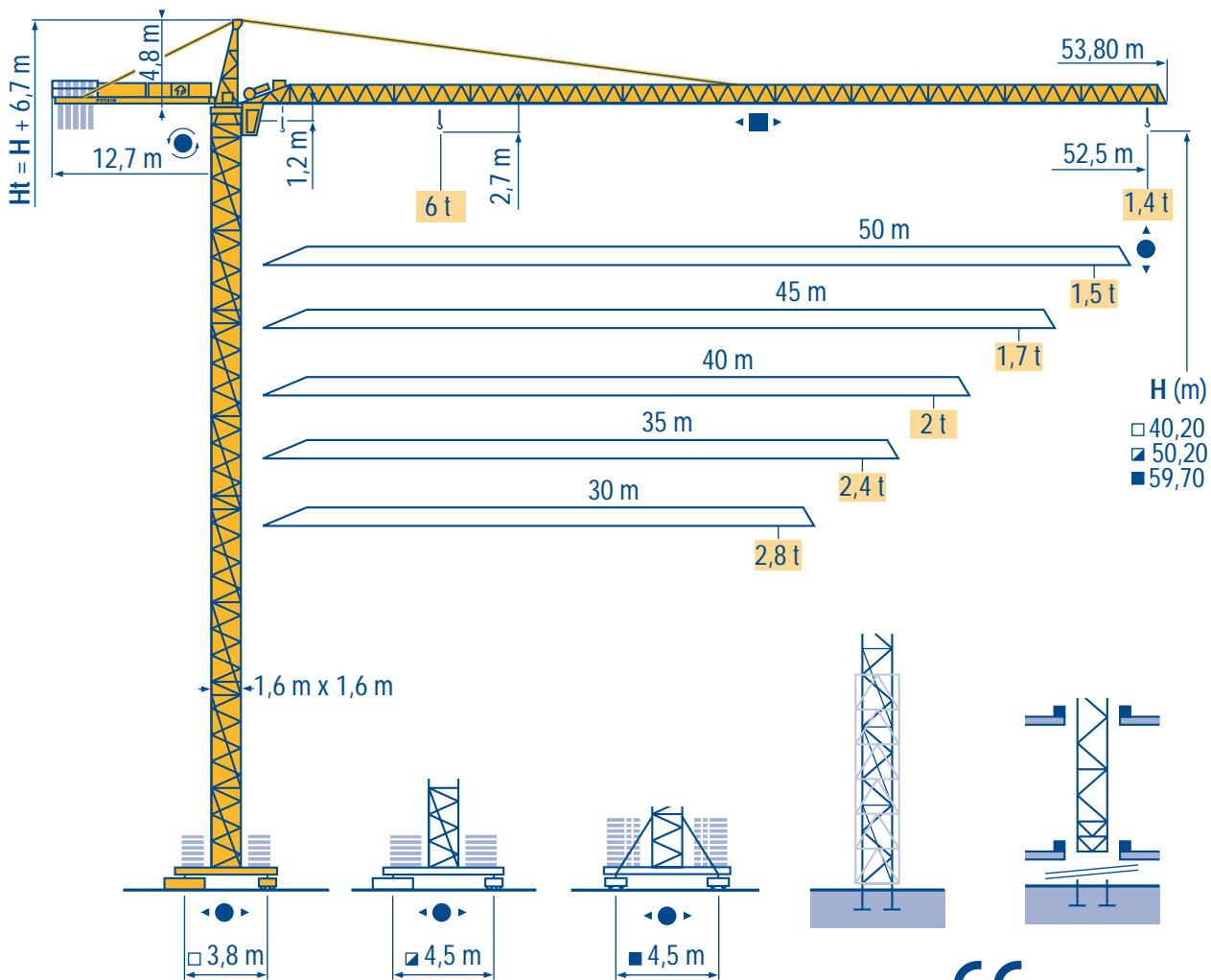
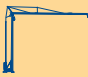








CITY CRANE MD 95 A



H (m)
 □ 40,20
 ■ 50,20
 ■ 59,70

CE FEM 1.001-A3

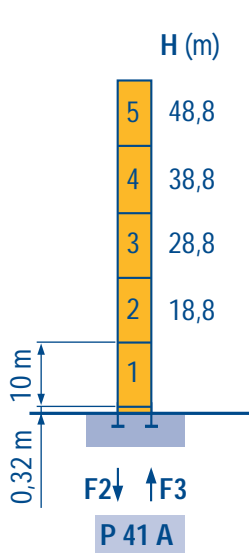
- HD 
- HDT 
- GTMR 
- CITY CRANE** 
- TOPKIT MD 
- MR 
- MAXI MD 
- MAXI TOPKIT 



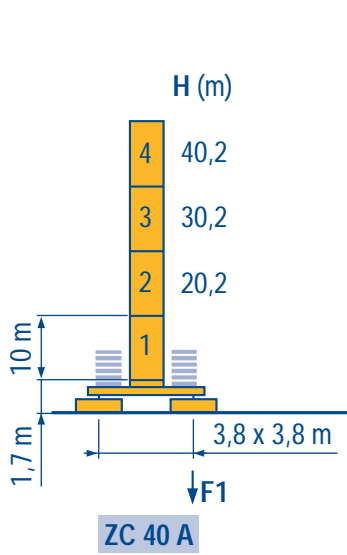
Maste / Eckdrücke
City 1,6 m

Mástil / Reacciones
City 1,6 m

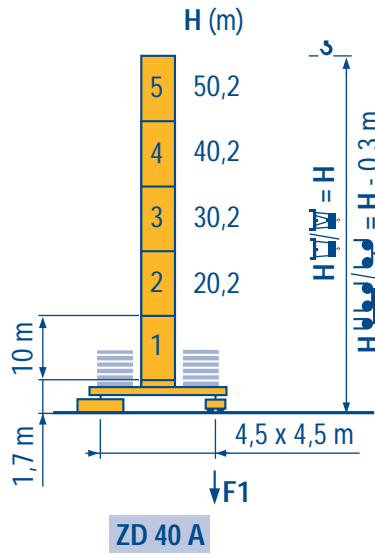
塔身 / 反力
City 1,6 m



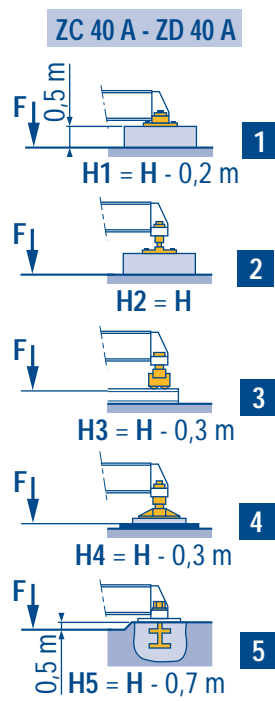
| | | |
|----|--------|---------|
| F2 | ● 93 t | ■ 129 t |
| F3 | ● 61 t | ■ 101 t |
| | 30 t | |



| | | |
|----|--------|--------|
| F1 | ● 54 t | ■ 61 t |
| | 32 t | |



| | | |
|----|--------|--------|
| F1 | ● 60 t | ■ 72 t |
| | 37 t | |

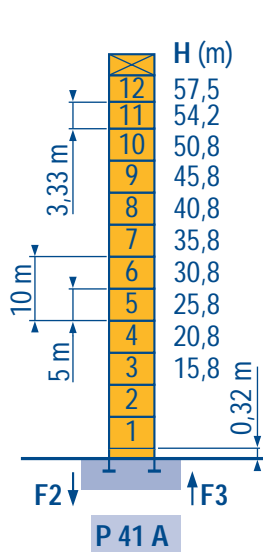


LNP 2

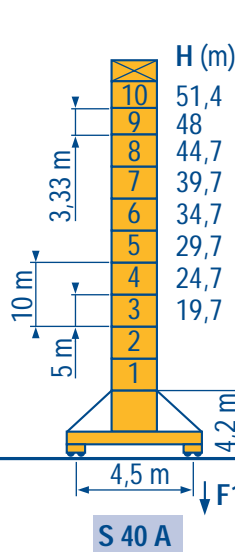
Télescopable 1,6 m
Teleskopierbar 1,6 m

Telescopic 1,6 m
Telescopico 1,6 m

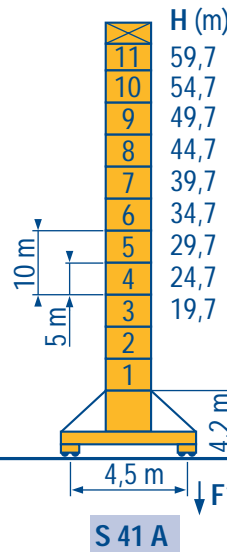
Telescopico 1,6 m
可顶升 1,6 m



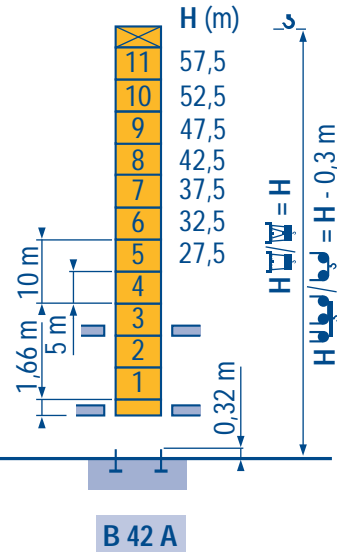
| | | |
|----|---------|---------|
| F2 | ● 109 t | ■ 171 t |
| F3 | ● 76 t | ■ 141 t |
| | 43 t | |



| | | |
|----|--------|--------|
| F1 | ● 67 t | ■ 87 t |
| | 48 t | |



| | | |
|----|--------|---------|
| F1 | ● 83 t | ■ 116 t |
| | 51 t | |



LNP 1

● Voir télescopage sur dalles
● Réactions en service
■ Réactions hors service
A vide sans lest avec flèche et hauteur maximum.

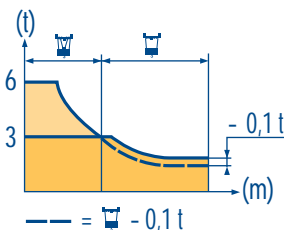
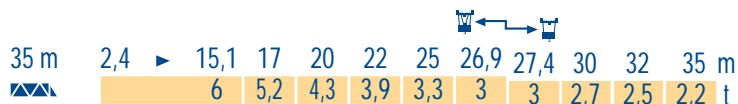
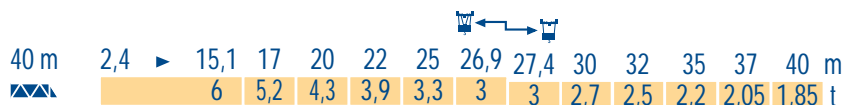
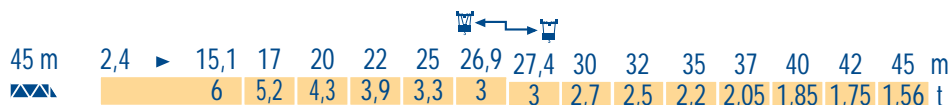
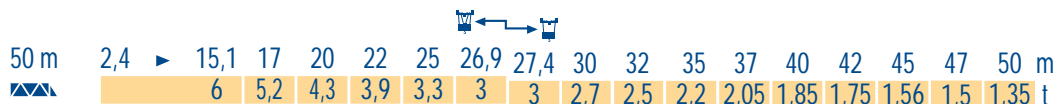
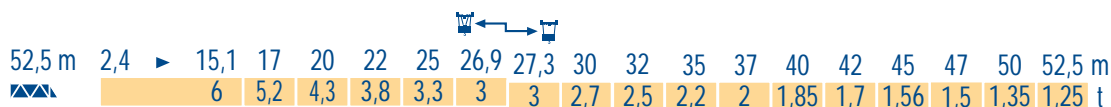
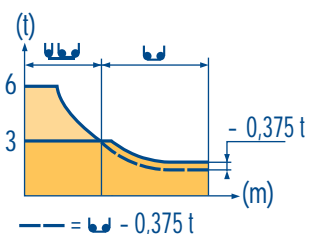
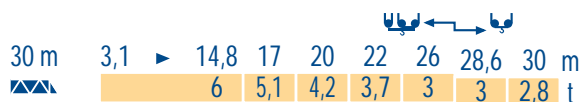
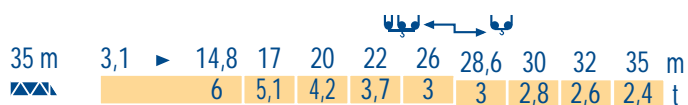
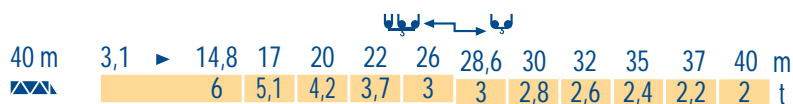
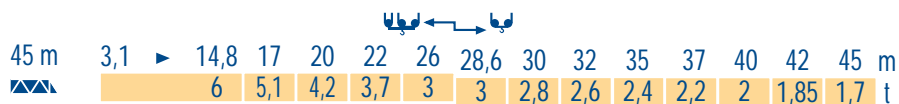
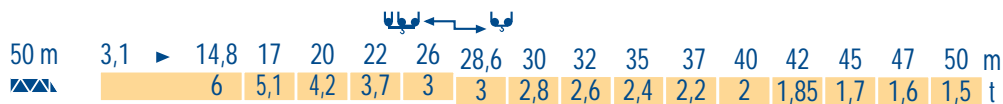
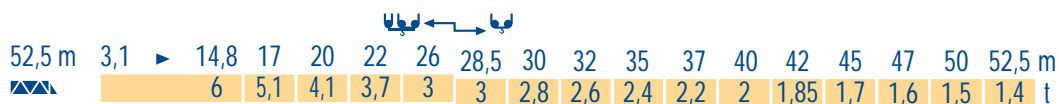
● See climbing crane
● Reactions in service
■ Reactions out of service
Without load and ballast with longest jib and maximum height.

● Consultare gru in cavedio
● Reazioni in servizio
■ Reazioni fuori servizio
A vuoto senza zavorra e con braccio massimo e altezza massima.

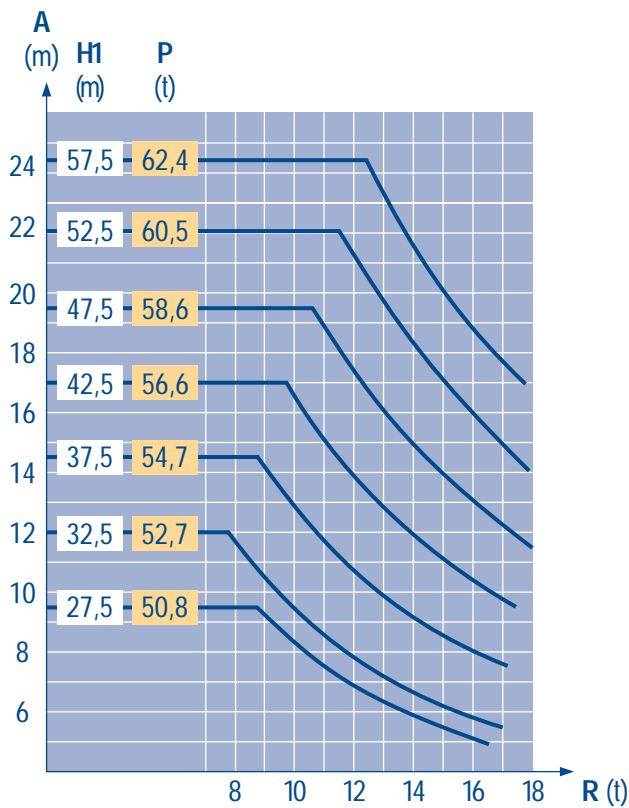
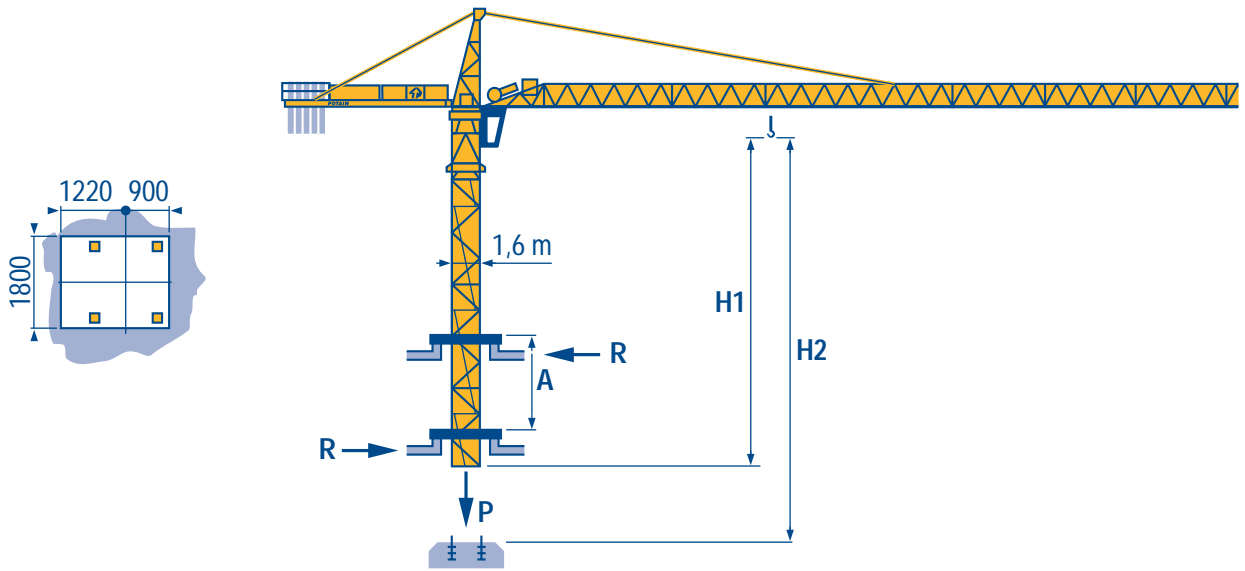
● Siehe Kletterkrane im Gebäude
● Reaktionskräfte in Betrieb
■ Reaktionskräfte außer Betrieb
Ohne Last und Ballast mit Maximalausleger und Maximalhöhe.

● Veá grúa trepadora
● Reacciones en servicio
■ Reacciones fuera de servicio
Sin carga, sin lastre con flecha y altura máxima.

● 见楼板顶升
● 工作状态下的反应
■ 非工作状态下的反应
空载, 无配重, 起重臂和高度均为最大值



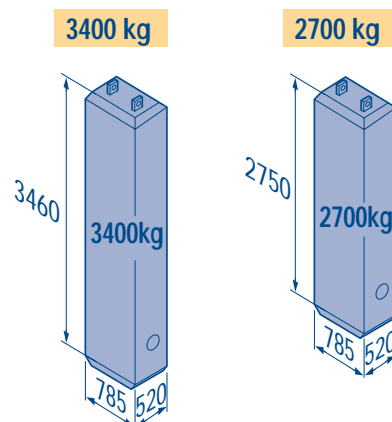
B 42 A



LNP 1

| | | | | | | |
|-----------|-------------------------------|----------|-------------------------------|-----------|------------------------------|----------|
| A | Distance entre cadres | F | Distance between collars | GB | Distanza fra i telai | I |
| H1 | Hauteur grue | | Crane height | | Altezza gru | |
| P | Poids de la grue (en service) | | Crane weight (in service) | | Peso della gru (in servizio) | |
| R | Réaction horizontale | | Horizontal reaction | | Reazione orizzontale | |
| A | Abstand zwischen den Rahmen | D | Distancia entra marcos | E | 各附着框之间距离 | C |
| H1 | Kranhöhe | | Altura grúa | | 工作状态下塔机高度 | |
| P | Krangewicht (in Betrieb) | | Peso de la grúa (en servicio) | | 工作状态下塔机重量 | |
| R | Horizontalkräfte | | Reaccion horizontal | | 水平反力 | |

|  |  | 3400 kg | 2700 kg |  (kg) |
|--|---|---------|---------|--|
| 52,5 m | 12 m | 5 | - | 17 000 |
| 50 m | 12 m | 3 | 2 | 15 600 |
| 45 m | 12 m | 1 | 4 | 14 200 |
| 40 m | 12 m | 4 | - | 13 600 |
| 35 m | 12 m | 2 | 2 | 12 200 |
| 30 m | 12 m | - | 4 | 10 800 |



LNP 1

Lest de base
Grundballast

F

Base ballast

GB

Zavorra di base

I

D


Lastre de base


E


压重

C

| | | | | | |
|--------|-------------|---|------|------|------|
| ∅1,6 m | ZC 40 A ◀●▶ | H (m) | 40,2 | 30,2 | 20,2 |
| | |  (t) | 45 | 35 | 30 |

| | | | | | | |
|--------|-------------|---|------|------|------|------|
| ∅1,6 m | ZD 40 A ◀●▶ | H (m) | 50,2 | 40,2 | 30,2 | 20,2 |
| | |  (t) | 70 | 40 | 35 | 30 |

| | | | | | | | | | | |
|--------|------------|---|------|------|------|------|------|------|------|------|
| ∅1,6 m | S 40 A ◀●▶ | H (m) | 51,4 | 49,7 | 44,7 | 39,7 | 34,7 | 29,7 | 24,7 | 19,7 |
| | |  (t) | 78 | 72 | 54 | 36 | 18 | 18 | 18 | 18 |

| | | | | | | | | | | | |
|--------|------------|---|------|------|------|------|------|------|------|------|------|
| ∅1,6 m | S 41 A ◀●▶ | H (m) | 59,7 | 54,7 | 49,7 | 44,7 | 39,7 | 34,7 | 29,7 | 24,7 | 19,7 |
| | |  (t) | 114 | 96 | 72 | 54 | 36 | 18 | 18 | 18 | 18 |

LNP 1

| | | | D | | | | E | | | | ch - PS hp | kW | |
|--|------------------------------|------------------------|--------------|----|------|-----|-----|---|----|------|---------------|---------|---------------|
| | | | | | | | | | | | | | |
| | 25 PC 15 | m/min | — | 6 | 30 | 60 | — | 3 | 15 | 30 | 25 | 18,4 | 296 m >296 |
| | | t | — | 3 | 3 | 1,5 | — | 6 | 6 | 3 | | | |
| | 33 PC 15 | m/min | — | 6 | 37,5 | 75 | — | 3 | 19 | 37,5 | 33 | 24 | 320 m >320 |
| | | t | — | 3 | 3 | 1,5 | — | 6 | 6 | 3 | | | |
| | 33 LVF 15 | m/min | 4,6 | 12 | 37,5 | 75 | 2,3 | 6 | 19 | 37,5 | 33 | 24 | 320 m >320 |
| | | t | 3 | 3 | 3 | 1,5 | 6 | 6 | 6 | 3 | | | |
| | 4 D3 V3 | m/min | 15 - 30 - 58 | | | | | | | | 4 | 3 | |
| | RCV 145 | tr/min U/min rpm | 0 → 0,8 | | | | | | | | 2 x 6 | 2 x 4,4 | |
| | RT 224 | m/min | 25 | | | | | | | | 2 x 4 | 2 x 2,9 | |
| | RT 324 | m/min | 12,5 - 25 | | | | | | | | 2 x 7 | 2 x 5,2 | |
| | TCV 449 ARC H ° 34,7 m | m/min | 10 - 50 | | | | | | | | 4 x 6,8 | 4 x 5 | |
| | RT 443 A1 2V | m/min | 15 - 30 | | | | | | | | 4 x 5 | 4 x 3,7 | |
| | TCV 449 ARC H ° 34,7 m | m/min | 10 - 50 | | | | | | | | 4 x 6,8 | 4 x 5 | |

| | | | |
|------------------------|--------|---|-----------------|
| CEI 38 | IEC 38 | kVA | |
| 400 V (+6% -10%) 50 Hz | | 25 PC : 50 kVA 33 PC : 50 kVA 33 LVF : 50 kVA | 84/534 - 87/405 |

LNP 2

| | | | | | |
|---|---|---|---|---|--|
| Levage Distribution Orientation Translation Conforme aux directives CEE 84/534 et 87/405 sur le niveau acoustique Nous consulter | F | Hoisting Trolleying Slewing Travelling In compliance with the EEC 84/534 and 87/405 Instructions on noise level Consult us | GB | Sollevamento Distribuzione Rotazione Traslazione Conforme alle direttive CEE 84/534 e 87/405 sul livello acustico Consultateci | I |
| | Heben Katzfahren Schwenken Kranfahren Gemäss EWG-Richtlinien 84/534 und 87/405 für den Schall-Leistungspegel Auf Anfrage | D | Elevación Distribución Orientación Traslación Conforme con las directivas CEE 84/534 y 87/405 sobre el nivel acustico Consultarnos | E | 起升 变幅 回转 行走 符合 CEE 84/534 - CEE 87/405 声晌度规定 请向我方咨询 |

Réf. 1997.48 LNP 2



18.Rue de Charbonnières, B.P. 173-F
69132 ECULLY Cedex
Tél. (33)04.72.18.20.20
Fax (33)04.72.18.20.00
http://www.potain.fr
E-mail : mkt@potain.fr

CITY CRANE MD 95 A

Copyright.Reproduction interdite © POTAIN 1997

Deutschland
POTAIN GmbH Tel : 06.105.704.0
Italia
POTAIN S.p.A. Tel : 039.65.631
Singapore
POTAIN PTE LTD Tel : (00.65) 227.1550

Modificazioni riservate / Modifications reservadas / Modificaciones reservadas / Subject to modification / Änderungen vorbehalten / Modifications réservées / 參攷我攷方 / 修改我攷方 / Printed in France / Réalisation SODIPE