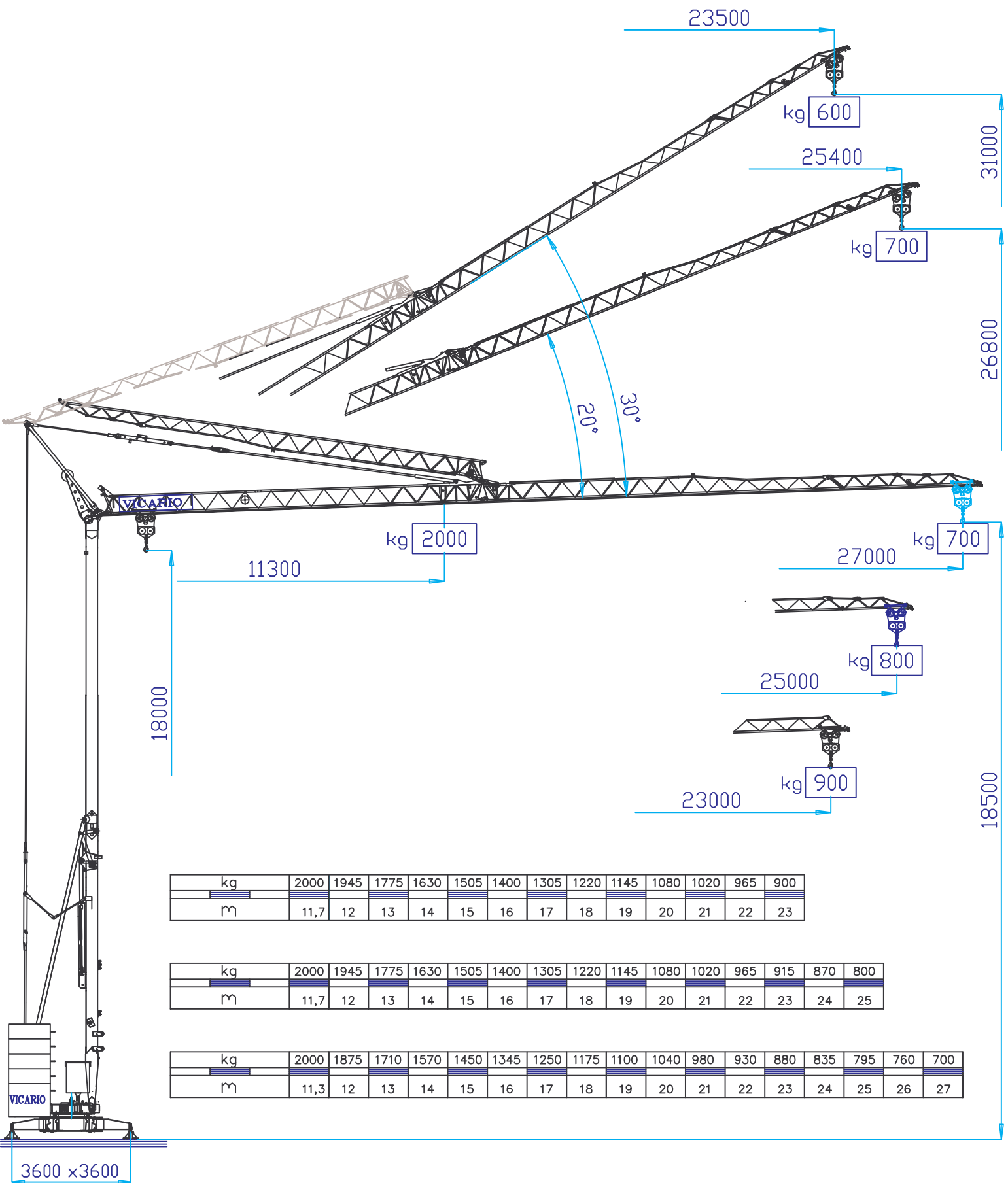


UMV 187.7









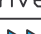

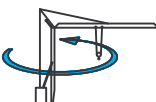
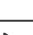
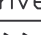






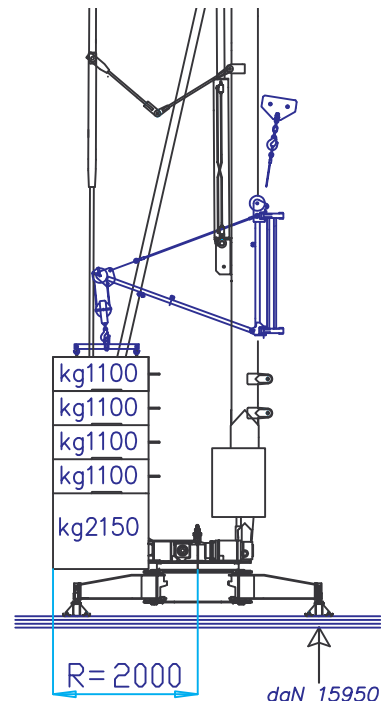
kg	2000	1945	1775	1630	1505	1400	1305	1220	1145	1080	1020	965	900
m	11,7	12	13	14	15	16	17	18	19	20	21	22	23

kg	2000	1945	1775	1630	1505	1400	1305	1220	1145	1080	1020	965	915	870	800
m	11,7	12	13	14	15	16	17	18	19	20	21	22	23	24	25

kg	2000	1875	1710	1570	1450	1345	1250	1175	1100	1040	980	930	880	835	795	760	700
m	11,3	12	13	14	15	16	17	18	19	20	21	22	23	24	25	26	27

3600 x 3600

 50 Hz V +6% -10%	 380V - 10kVA		
 m/I' kg kW			
	4,5	18	36
	2000	2000	800
9 (Inverter)			
 m/I' kW			
	11	26	48
	3 (Inverter)		
 n/I' kW			
	0,3	0,6	0,9
	1,84 (Inverter)		
 min kW			
	8		
 kg	9280		



DOTAZIONE DI SERIE

Sollevamento e rotazione a tre velocità con controllo elettronico, zincatura della struttura e dei tiranti, contrappeso di montaggio, braccio modulare impennabile, carrello rampante, funzionamento con braccio ripiegato, comando a pulsantiera via cavo, carter di protezione per ralla e meccanismi, predisposizione per autoavvorrimento e radiocomando, armadio elettrico in acciaio inox, documentazione a norme CEE.

SERIENAUSSTATTUNG

Heben und Rotation mit drei Geschwindigkeiten, Strukturverzinkung, Montagegegengewicht, hochklappbarer, Modulararm, aufsteigender Wagen, Funktionieren mit eingeklapptem Arm, Steuerung mit Druckknopftafel via Kabel, Schutzvorrichtungen für Drehverbindungen und Mechanismen, Vorbereitung für Selbstballasteinahme und Funksteuerung, elektrischer Schrank aus rostfreiem Stahl, Dokumentation gemäß EC Vorschriften

STANDARD FEATURES

3-speed lifting and rotation with electronic control, galvanised structure, installation counterweight, pull-up modular jib, translation trolley, operation with folded jib, cable-operated pushbutton remote control, guard for slewing ring and mechanisms, designed to allow installation of self-ballasting device and radio control, stainless steel electrical cabinet, documentation in accordance with EU standards

EQUIPEMENT DE SERIE

Levage e rotazione a tre velocità con controllo elettronico, galvanizzazione della struttura e dei tiranti, contrappeso di montaggio, braccio modulare elevabile, funzionamento braccio ripiegato, comando par cavo, carter di protezione per la corona e i meccanismi, predisposizione per autolestaggio e comando radio, armadio elettrico in acciaio inox, documentazione conforme alle norme CEE

DOTACION DE SERIE

Levantamiento y rotación a tres velocidades con control electrónico, galvanización de la estructura, contrapeso de montaje, brazo modular empinnable, carro rampante, funcionamiento con brazo replgado, accionamiento por pulsadores viacable, carter de protección para corona de giro y mecanismos, predisposición para autocontrapeso y radiocontrol, armario eléctrico de acero inox, documentación en según normas CEE

